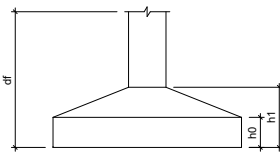
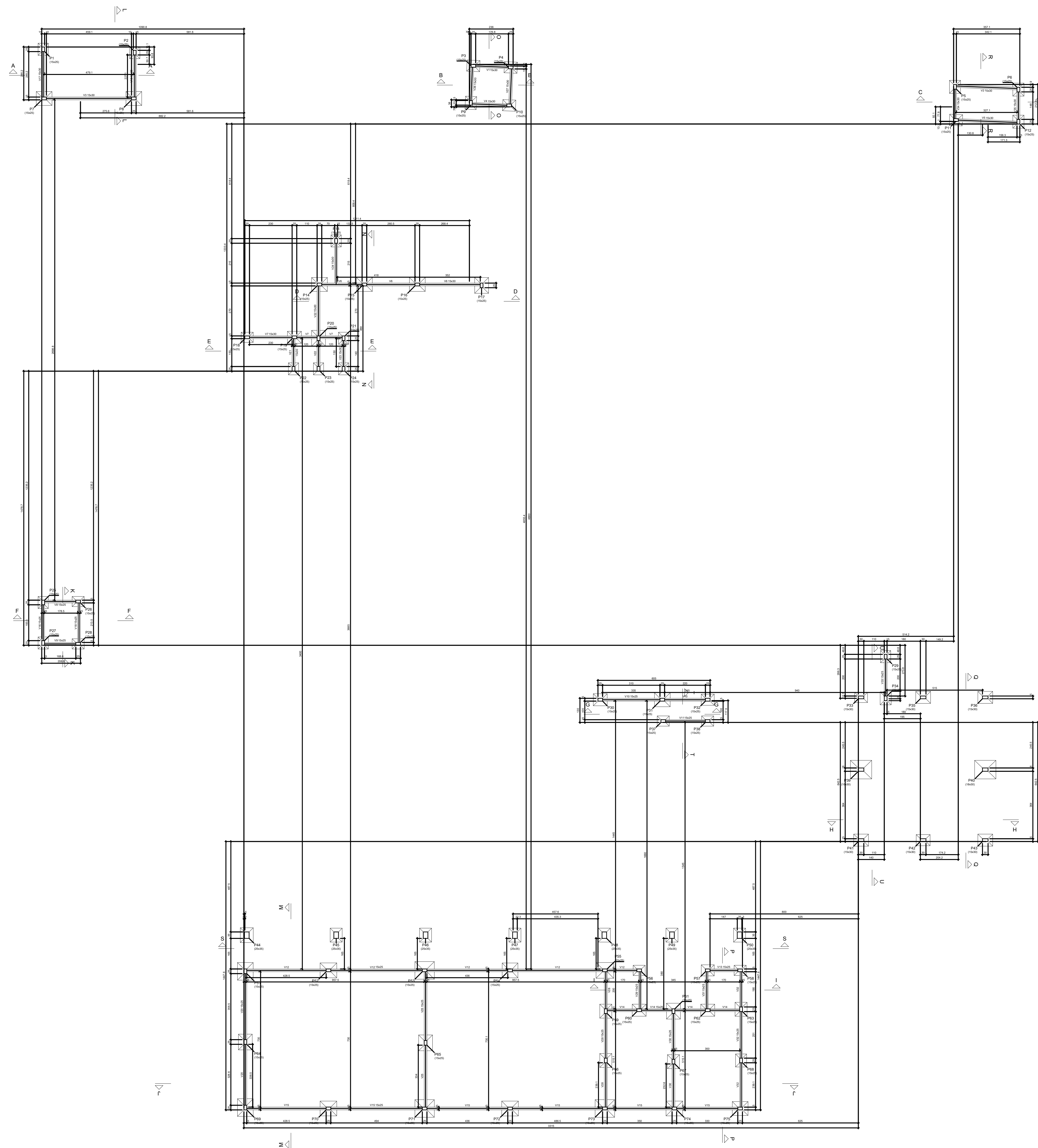


COORDENADAS		ELEVACÃO	
LE	LA	LA	LA
1	1	7.37	198.00
1	2	495.55	1098.16
1	3	1358.16	1433.16
1	4	1628.16	1740.66
1	5	2026.16	2315.06
1	6	2521.06	3013.16
1	7	3223.16	3348.16
1	8	3592.75	3785.16
1	9	4420.66	4533.16
1	10	4755.86	4927.40
1	11	5090.66	5269.90
1	12	5726.40	
2	1	1046.27	
2	2	1286.27	
2	3	1571.27	
2	4	1736.27	
2	5	2996.50	
2	6	3288.77	
2	7	3521.27	
2	8	3636.27	
2	9	3898.27	
2	10	4278.77	
2	11	4791.27	
2	12	4986.27	
2	13	5201.27	
2	14	5372.27	
2	15	5473.77	
2	16	5726.40	





Item	Descrição	Quantidade	Unidade
1.01	Asfalto	1.000	m²
1.02	Base	1.000	m²
1.03	Sub-base	1.000	m²
1.04	Leito	1.000	m²
1.05	Revestimento	1.000	m²
1.06	Revestimento	1.000	m²
1.07	Revestimento	1.000	m²
1.08	Revestimento	1.000	m²
1.09	Revestimento	1.000	m²
1.10	Revestimento	1.000	m²
1.11	Revestimento	1.000	m²
1.12	Revestimento	1.000	m²
1.13	Revestimento	1.000	m²
1.14	Revestimento	1.000	m²
1.15	Revestimento	1.000	m²
1.16	Revestimento	1.000	m²
1.17	Revestimento	1.000	m²
1.18	Revestimento	1.000	m²
1.19	Revestimento	1.000	m²
1.20	Revestimento	1.000	m²

Item	Descrição	Quantidade	Unidade
1.01	Asfalto	1.000	m²
1.02	Base	1.000	m²
1.03	Sub-base	1.000	m²
1.04	Leito	1.000	m²
1.05	Revestimento	1.000	m²
1.06	Revestimento	1.000	m²
1.07	Revestimento	1.000	m²
1.08	Revestimento	1.000	m²
1.09	Revestimento	1.000	m²
1.10	Revestimento	1.000	m²
1.11	Revestimento	1.000	m²
1.12	Revestimento	1.000	m²
1.13	Revestimento	1.000	m²
1.14	Revestimento	1.000	m²
1.15	Revestimento	1.000	m²
1.16	Revestimento	1.000	m²
1.17	Revestimento	1.000	m²
1.18	Revestimento	1.000	m²
1.19	Revestimento	1.000	m²
1.20	Revestimento	1.000	m²

Item	Descrição	Quantidade	Unidade
1.01	Asfalto	1.000	m²
1.02	Base	1.000	m²
1.03	Sub-base	1.000	m²
1.04	Leito	1.000	m²
1.05	Revestimento	1.000	m²
1.06	Revestimento	1.000	m²
1.07	Revestimento	1.000	m²
1.08	Revestimento	1.000	m²
1.09	Revestimento	1.000	m²
1.10	Revestimento	1.000	m²
1.11	Revestimento	1.000	m²
1.12	Revestimento	1.000	m²
1.13	Revestimento	1.000	m²
1.14	Revestimento	1.000	m²
1.15	Revestimento	1.000	m²
1.16	Revestimento	1.000	m²
1.17	Revestimento	1.000	m²
1.18	Revestimento	1.000	m²
1.19	Revestimento	1.000	m²
1.20	Revestimento	1.000	m²

Legenda: 1.01 Asfalto, 1.02 Base, 1.03 Sub-base, 1.04 Leito, 1.05 Revestimento, 1.06 Revestimento, 1.07 Revestimento, 1.08 Revestimento, 1.09 Revestimento, 1.10 Revestimento, 1.11 Revestimento, 1.12 Revestimento, 1.13 Revestimento, 1.14 Revestimento, 1.15 Revestimento, 1.16 Revestimento, 1.17 Revestimento, 1.18 Revestimento, 1.19 Revestimento, 1.20 Revestimento.

Forma do pavimento BALDRAME (Nível 0)



GOVERNO DO ESTADO DO PIAUÍ

SEDUC - SECRETARIA DE ESTADO DA EDUCAÇÃO

DEPARTAMENTO:
GERÊNCIA DE ARQUITETURA E ENGENHARIA

TÍTULO DO PROJETO: PROJETO DE CONSTRUÇÃO - U.E FRANCISCO ANTONIO DA SILVA

ENDEREÇO DO SERVIÇO: Praça Jose Gregorio Da Costa, s/n Centro, São Braz do Piauí - PI, 64720-000

TÍTULO DO DESENHO:

DESENHO:
EST1

PRONCHIA:
03/08

ESCALA:
INDICADA

REVISÃO:
01

São Braz - PI

PROJETO BÁSICO

ZONA:
URBANA

DESENHO:
DATA

REVISÃO:
INDICADA

REVISÃO:
INDICADA



Virus			
Name	Sample	Category (bits)	Score
V1	196303	0	3000
V2	196303	0	3000
V3	196303	0	3000
V4	196303	0	3000
V5	196303	0	3000
V6	196303	0	3000
V7	196303	0	3000
V8	196303	0	3000
V9	196303	0	3000
V10	196303	0	3000
V11	196303	0	3000
V12	196303	0	3000
V13	196303	0	3000
V14	196303	0	3000
V15	204303	0	3000
V16	196303	0	3000
V17	196303	0	3000
V18	196303	0	3000
V19	196303	0	3000
V20	196303	0	3000
V21	196303	0	3000
V22	196303	0	3000
V23	196303	0	3000
V24	196303	0	3000
V25	196303	0	3000
V26	196303	0	3000
V27	196303	0	3000
V28	196303	0	3000
V29	196303	0	3000
V30	196303	0	3000
V31	196303	0	3000
V32	196303	0	3000
V33	196303	0	3000
V34	196303	0	3000
V35	196303	0	3000
V36	196303	0	3000
V37	196303	0	3000
V38	196303	0	3000
V39	196303	0	3000
V40	196303	0	3000

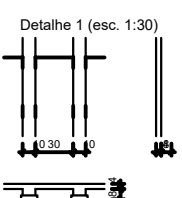
Detalle de embarque				
Celula	Top	Nome	Quantidade	
1	185 Unidades	185	185	185

Lagoa								
Elevação					Sobrecarga (kg/m²)			
Nome	Tipo	Altura (m)	Elevação (m)	Nível (m)	Fuso próprio (kg/m²)	Adicional	Acidental	Limite
L1	Solteira 10	12	0	200	131	134	18	-
L2	Solteira 95	12	0	200	151	154	18	-

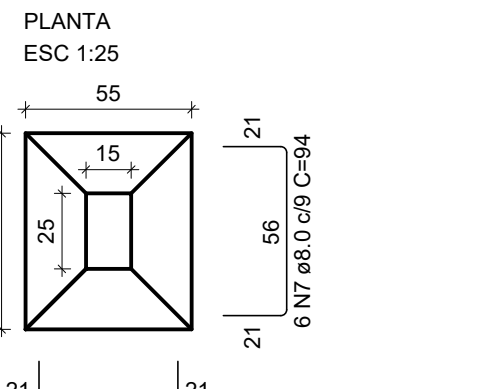
Características das amostras	
NR ($\mu\text{g}/\text{m}^3$)	EtC ($\mu\text{g}/\text{m}^3$)
250	241500

Densidade infecciosa de humanos = 12/m²

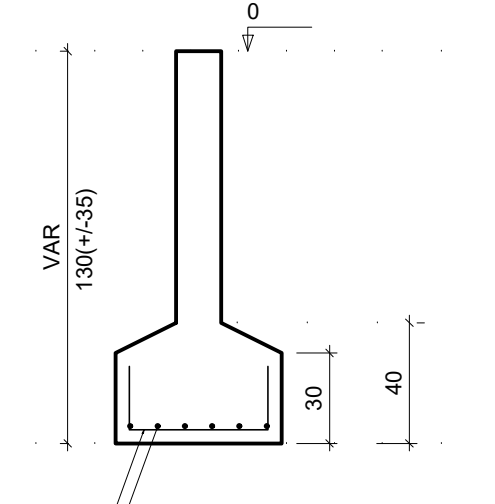
Feature	Single	Two-way	Three-way	Small
F1	19626	0	0	0
F2	19626	0	0	0
F3	19626	0	0	0
F4	19626	0	0	0
F5	19626	0	0	0
F6	19626	0	0	0
F7	19626	0	0	0
F8	19626	0	0	0
F9	19626	0	0	0
F10	19626	0	0	0
F11	19626	0	0	0
F12	19626	0	0	0
F13	19626	0	0	0
F14	19626	0	0	0
F15	19626	0	0	0
F16	19626	0	0	0
F17	19626	0	0	0
F18	19626	0	0	0
F19	19626	0	0	0
F20	19626	0	0	0
F21	19626	0	0	0
F22	19626	0	0	0
F23	19626	0	0	0
F24	19626	0	0	0
F25	19626	0	0	0
F26	19626	0	0	0
F27	19626	0	0	0
F28	19626	0	0	0
F29	19626	0	0	0
F30	19626	0	0	0
F31	19626	0	0	0
F32	19626	0	0	0
F33	19626	0	0	0
F34	19626	0	0	0
F35	19626	0	0	0
F36	19626	0	0	0
F37	19626	0	0	0
F38	19626	0	0	0
F39	19626	25	135	0
F40	19626	0	0	0
F41	19626	0	0	0
F42	19626	0	0	0
F43	19626	0	0	0
F44	19626	0	0	0
F45	29348	0	0	0
F46	29348	0	0	0
F47	29348	0	0	0
F48	29348	0	0	0
F49	29348	0	0	0
F50	29348	0	0	0
F51	29348	0	0	0
F52	29348	0	0	0
F53	29348	0	0	0
F54	29348	0	0	0
F55	29348	0	0	0
F56	29348	0	0	0
F57	29348	0	0	0
F58	29348	0	0	0
F59	29348	0	0	0
F60	29348	0	0	0
F61	29348	0	0	0
F62	29348	0	0	0
F63	29348	0	0	0
F64	29348	0	0	0
F65	29348	0	0	0
F66	29348	0	0	0
F67	29348	0	0	0
F68	29348	0	0	0
F69	29348	0	0	0
F70	29348	0	0	0
F71	29348	0	0	0
F72	29348	0	0	0
F73	29348	0	0	0
F74	29348	0	0	0



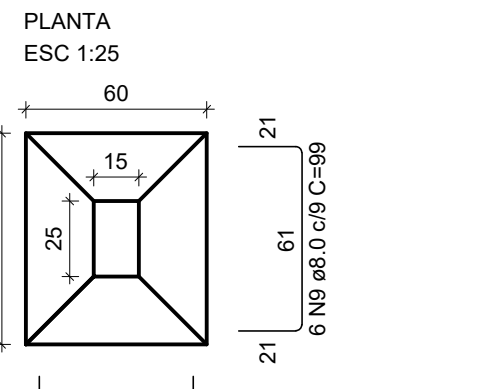
S1=S2=S13=S18=S21=S22=S23=S24=S25=S26
=S27=S28=S29=S37=S38=S56=S58



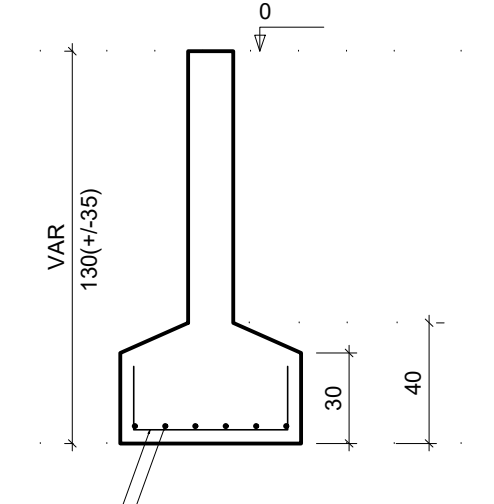
CORTE
ESC 1:25



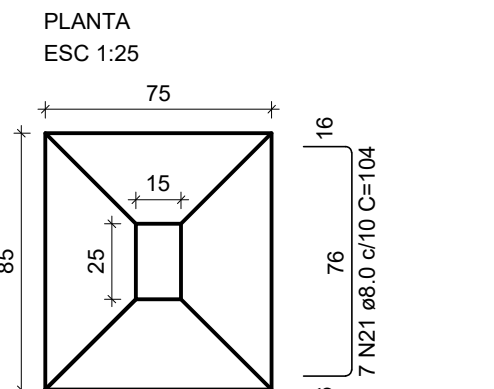
S3=S4=S5=S6=S9=S10=S11=S12=S32=S34=S57



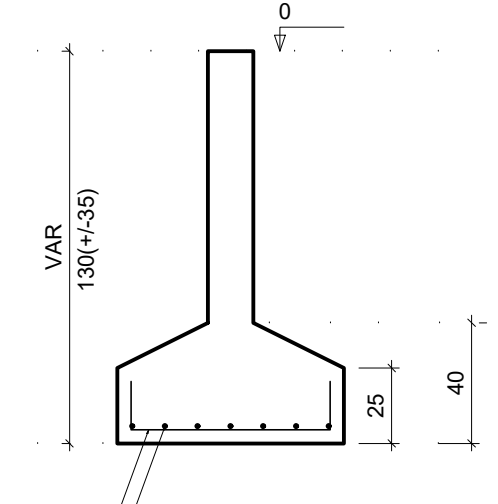
CORTE
ESC 1:25



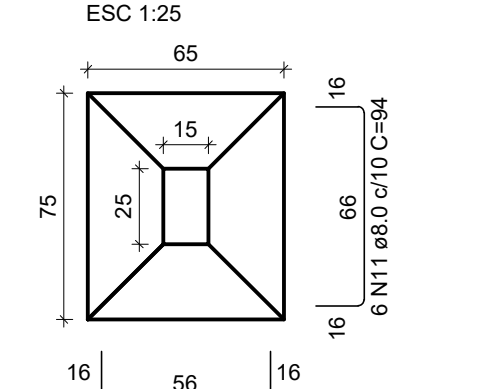
S7=S8=S14=S15=S16=S17=S20=S31=S61=S64
=S65=S75



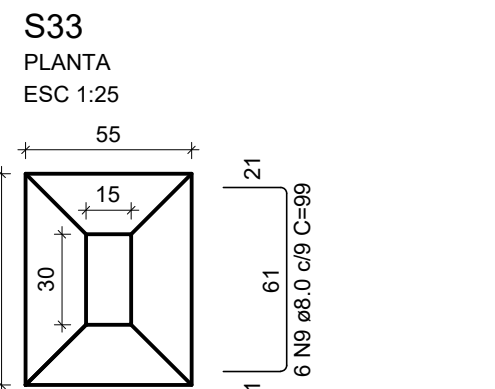
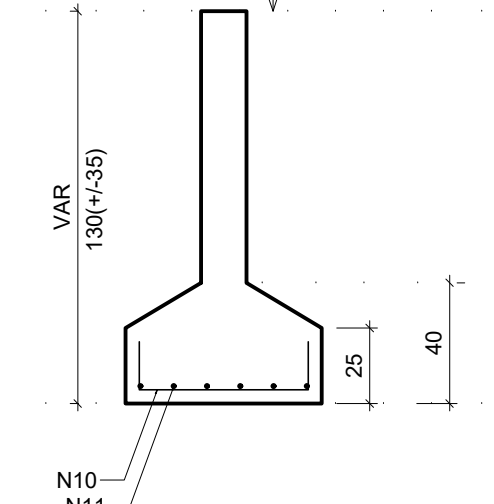
CORTE
ESC 1:25



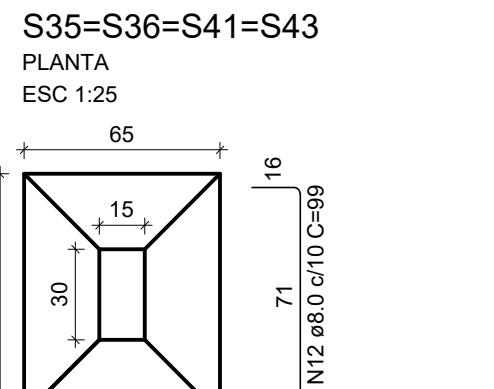
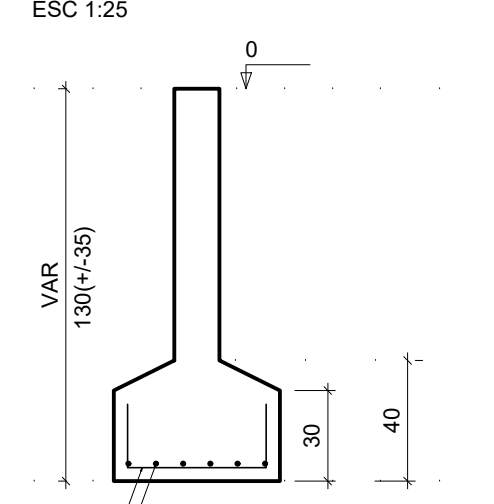
S19=S30=S59=S60=S62=S63=S66=S67



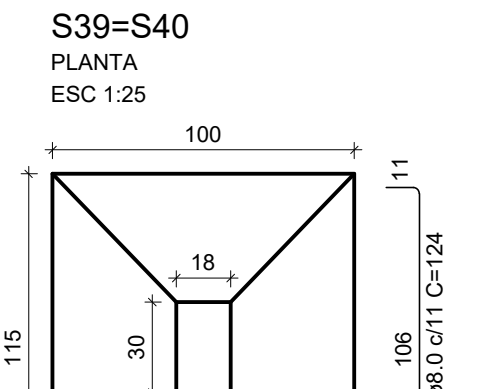
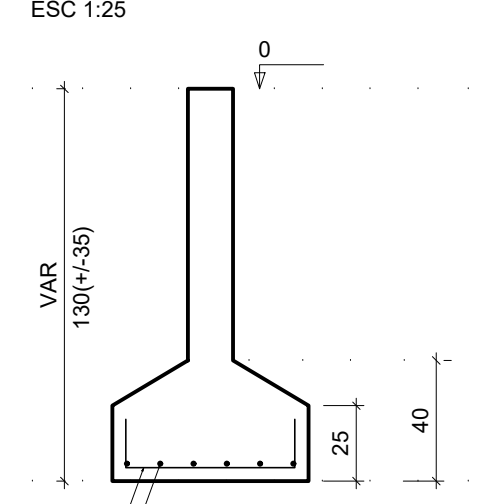
CORTE
ESC 1:25



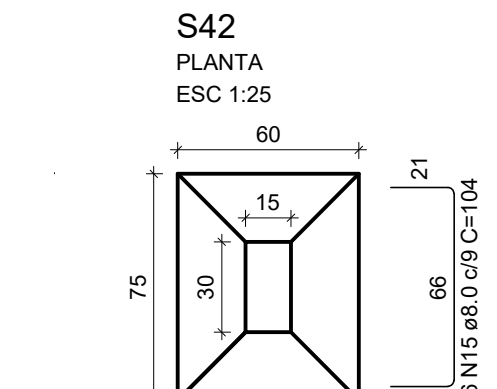
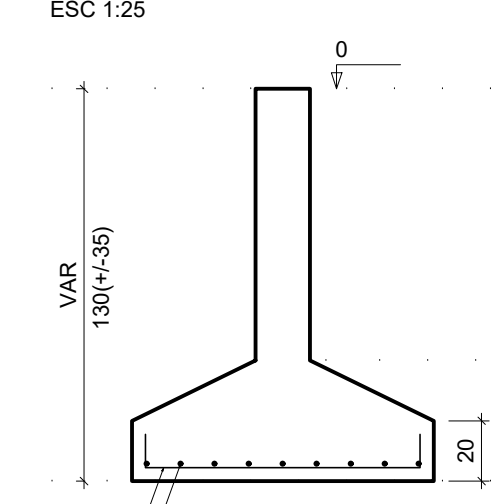
CORTE
ESC 1:25



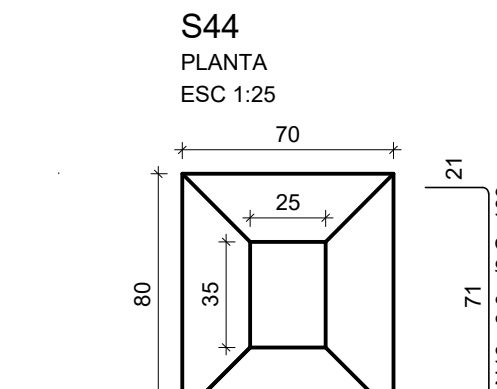
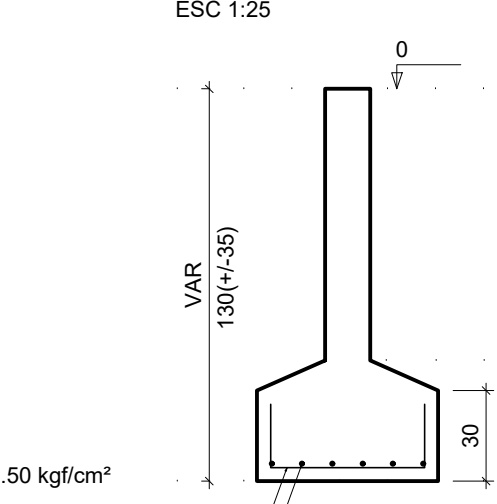
CORTE
ESC 1:25



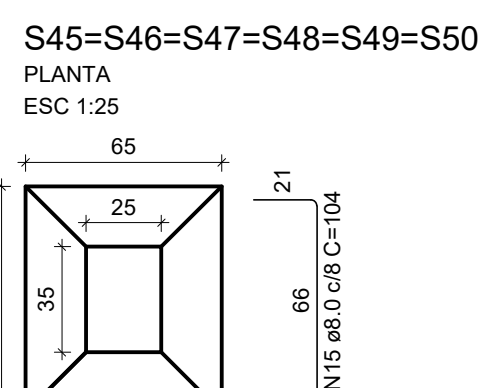
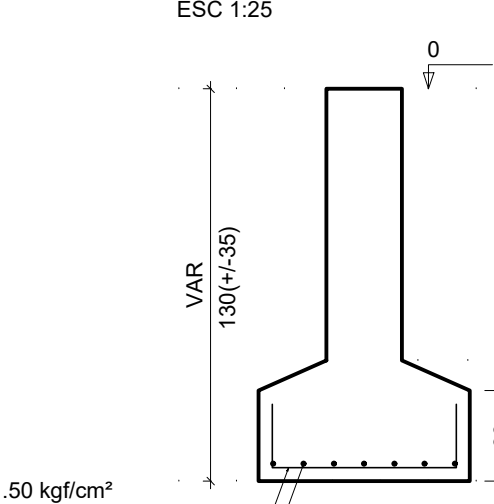
CORTE
ESC 1:25



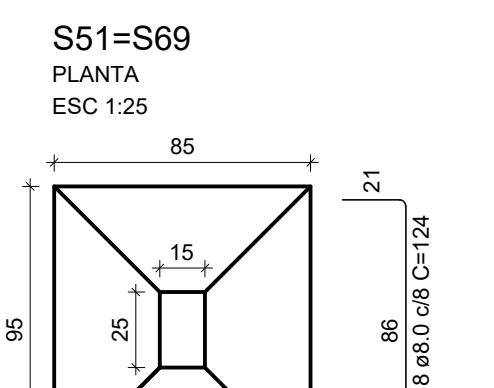
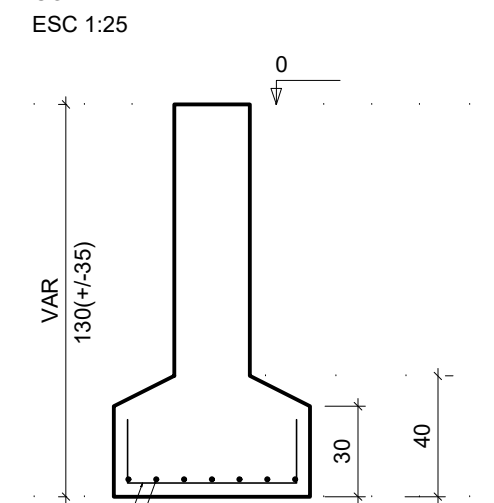
CORTE
ESC 1:25



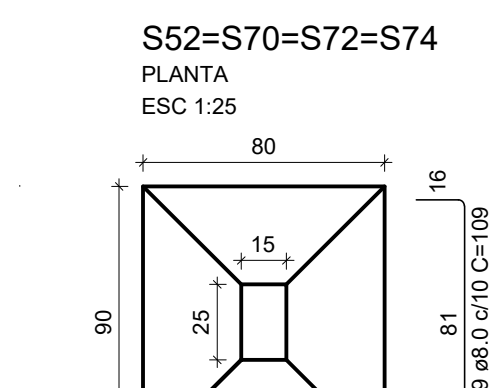
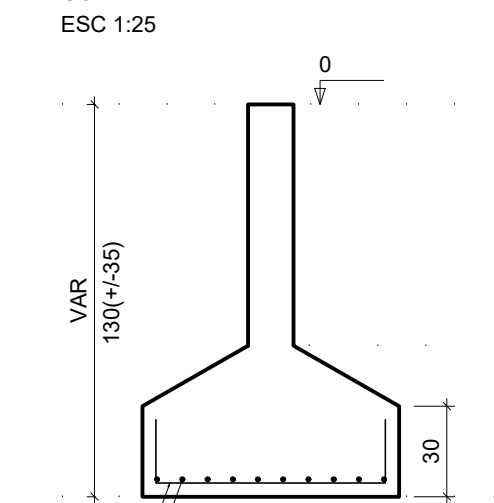
CORTE
ESC 1:25



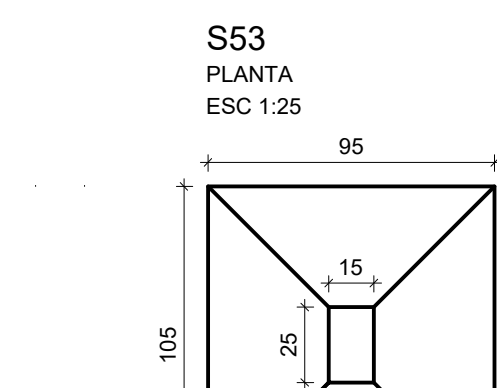
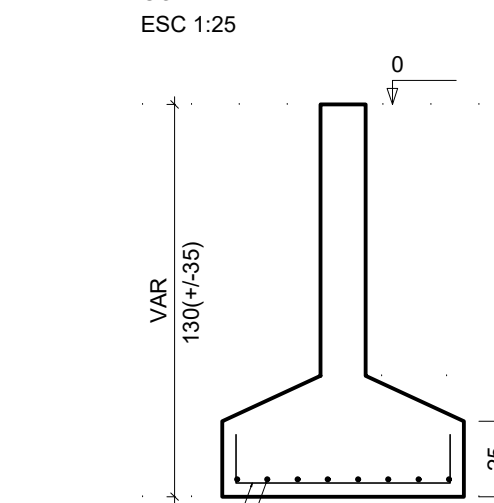
CORTE
ESC 1:25



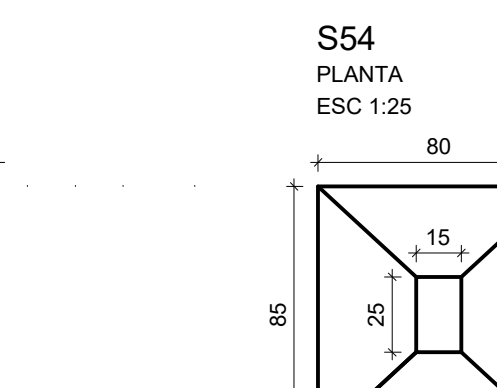
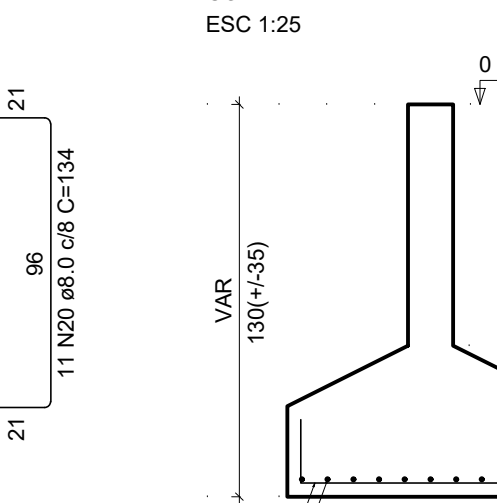
CORTE
ESC 1:25



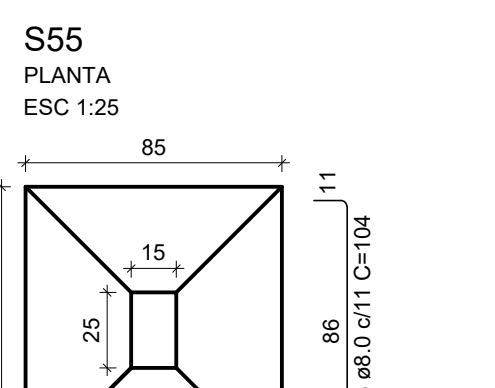
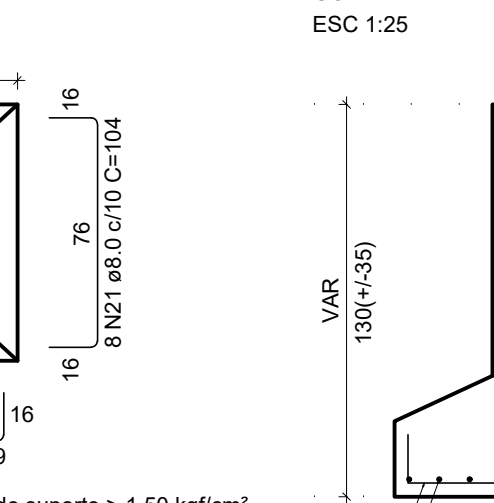
CORTE
ESC 1:25



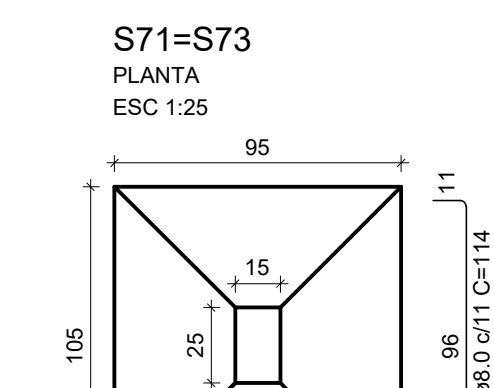
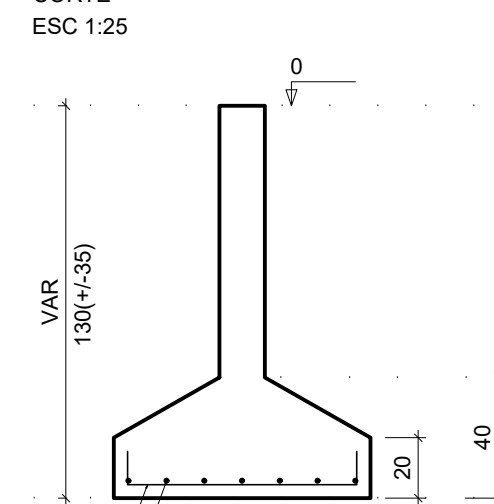
CORTE
ESC 1:25



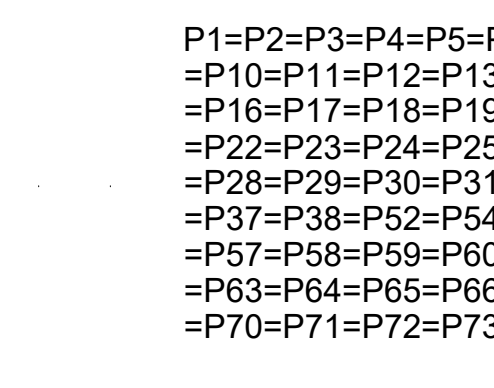
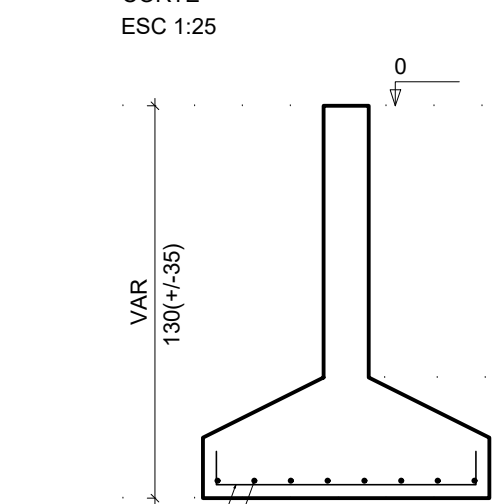
CORTE
ESC 1:25



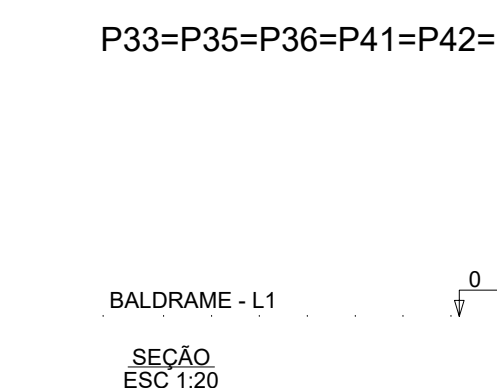
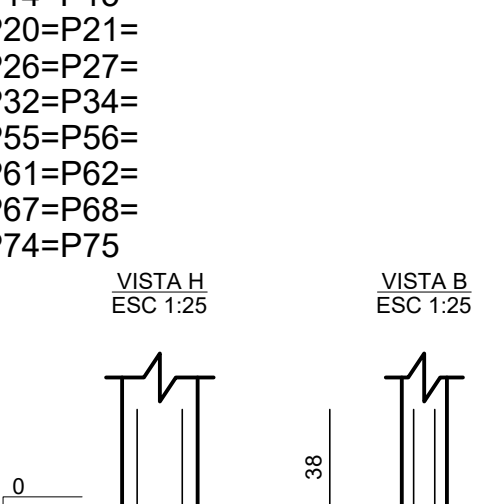
CORTE
ESC 1:25



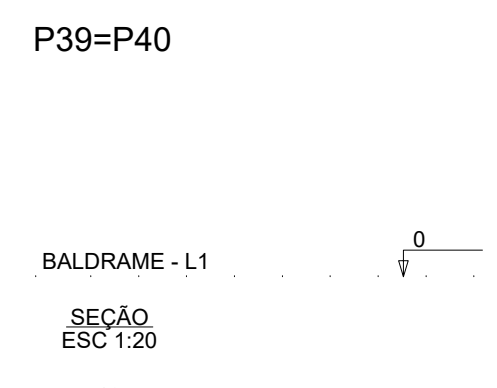
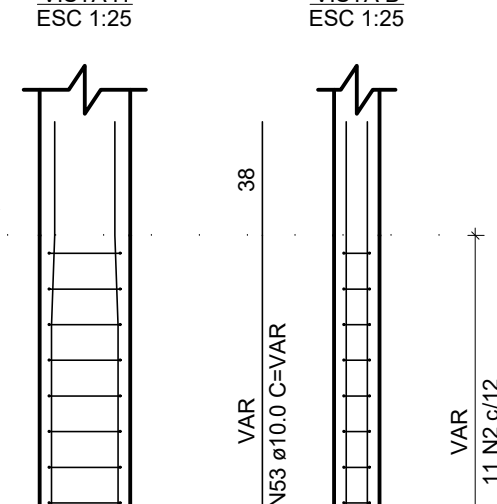
CORTE
ESC 1:25



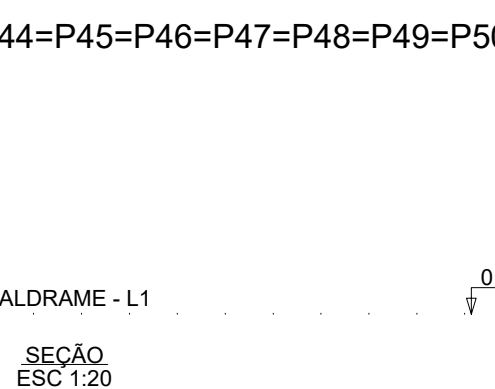
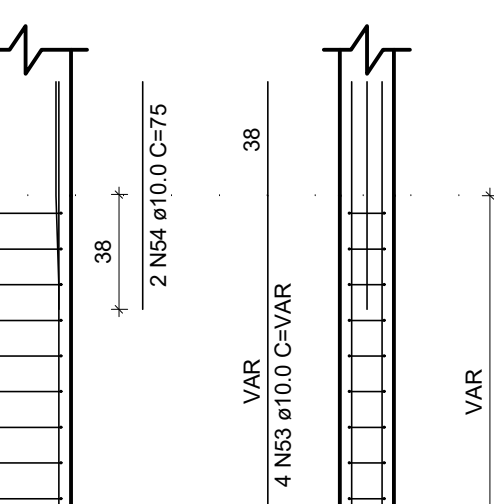
CORTE
ESC 1:25



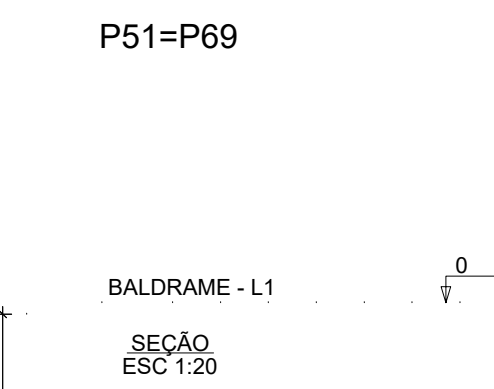
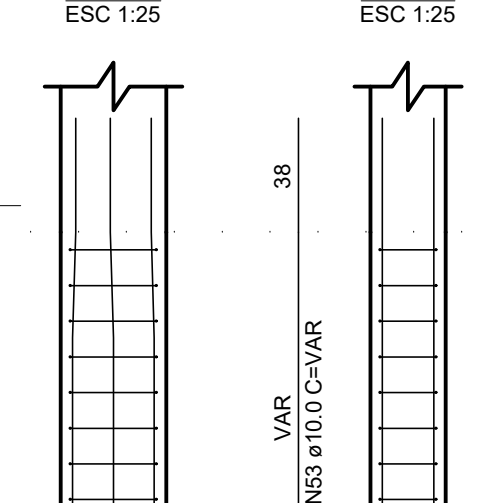
CORTE
ESC 1:25



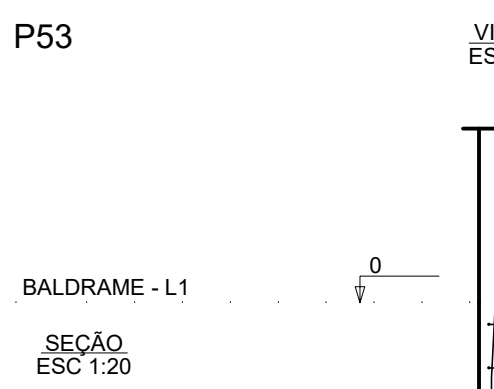
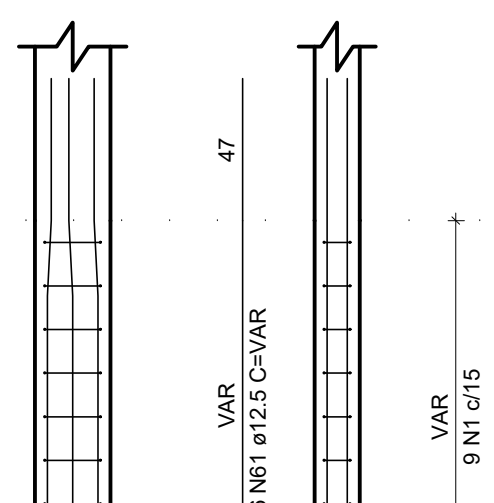
CORTE
ESC 1:25



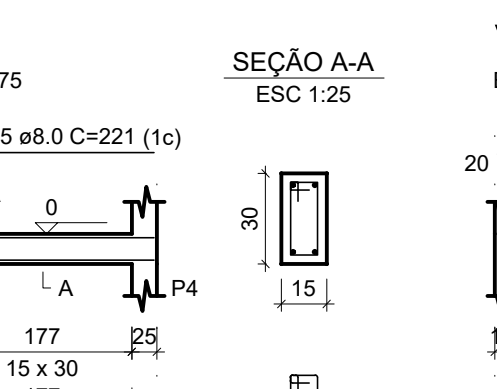
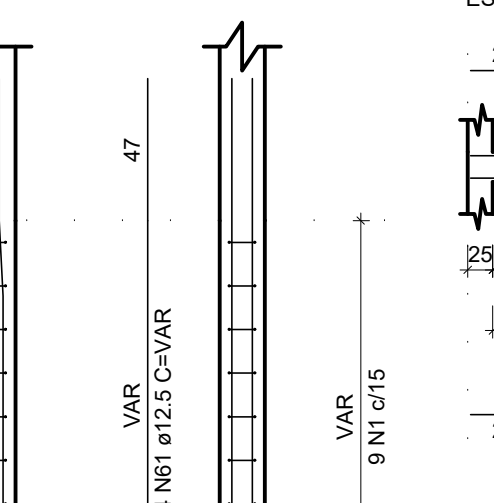
CORTE
ESC 1:25



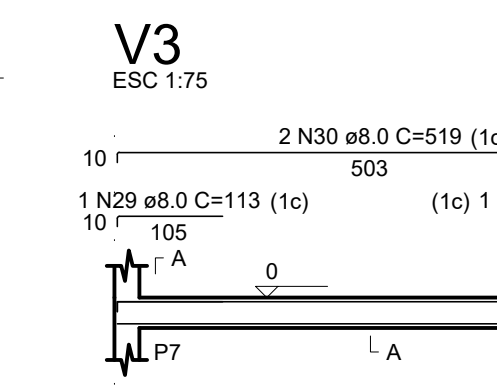
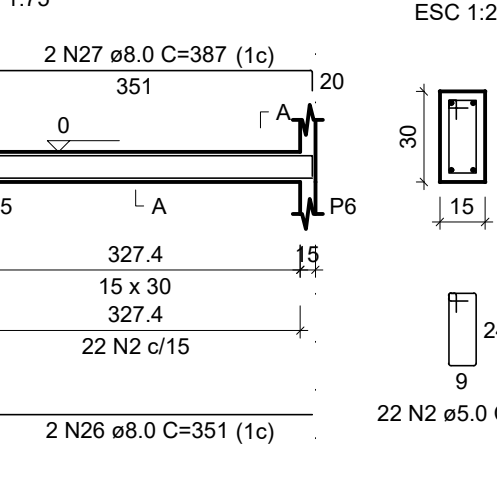
CORTE
ESC 1:25



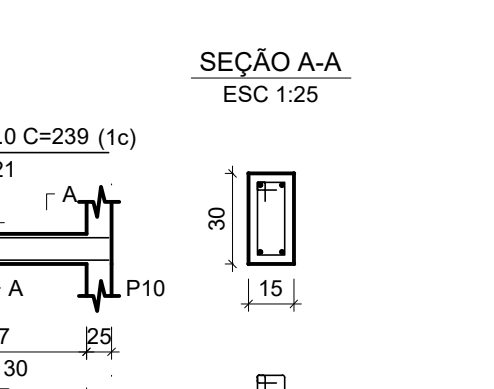
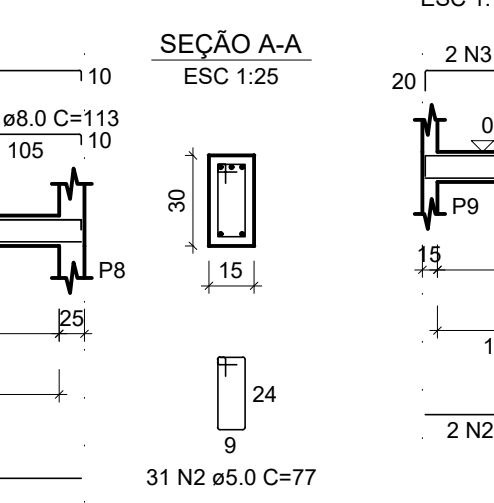
CORTE
ESC 1:25



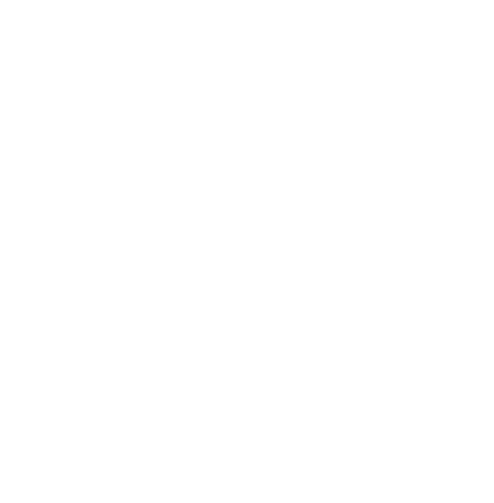
CORTE
ESC 1:75



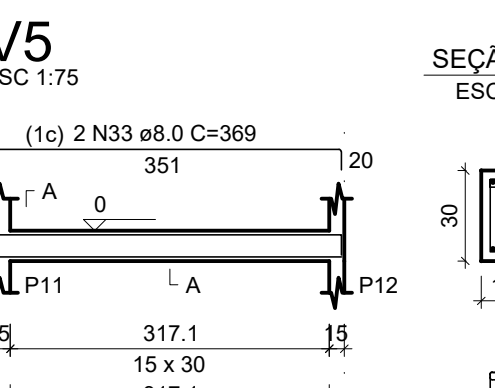
CORTE
ESC 1:75



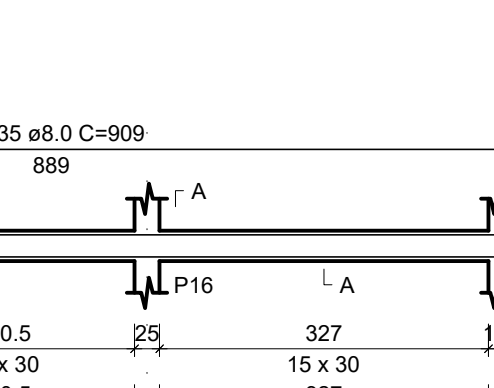
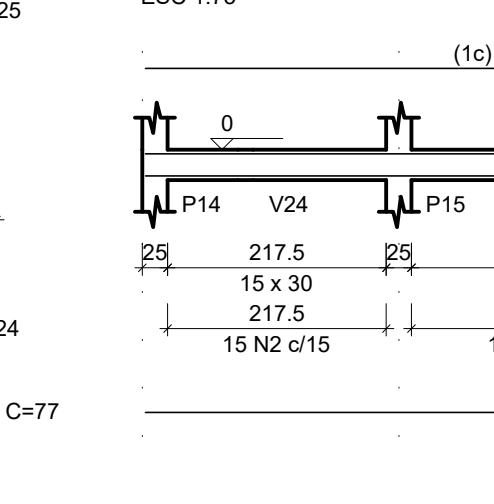
CORTE
ESC 1:75



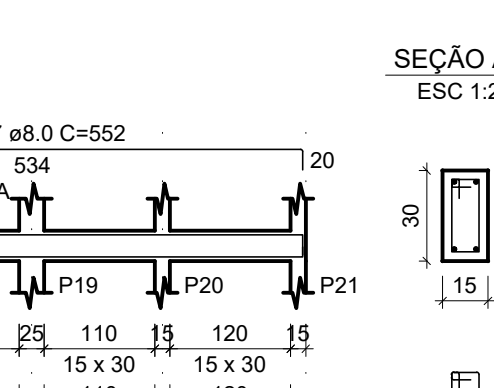
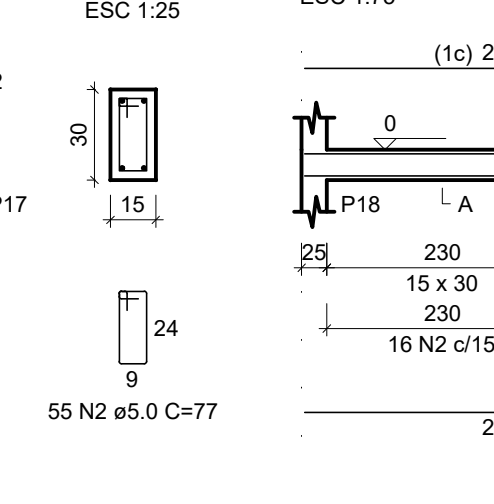
CORTE
ESC 1:75



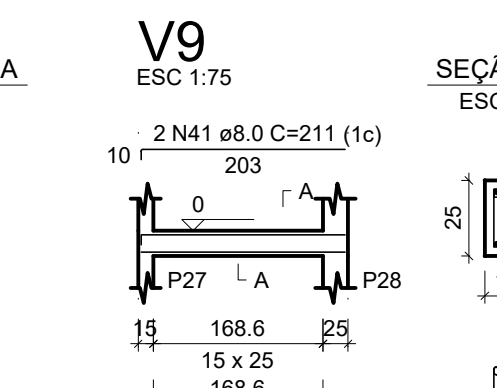
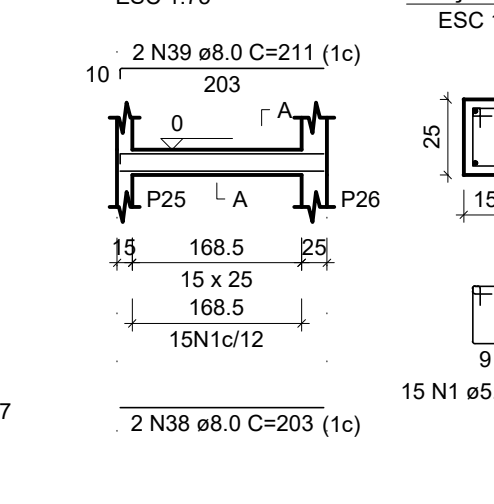
CORTE
ESC 1:75



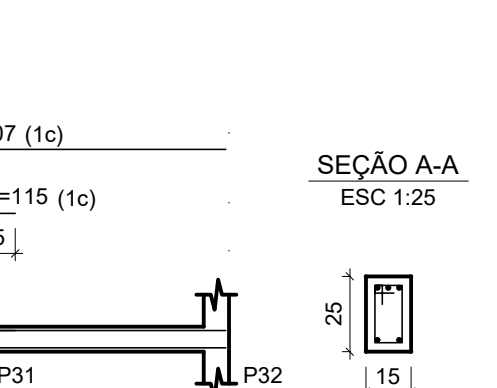
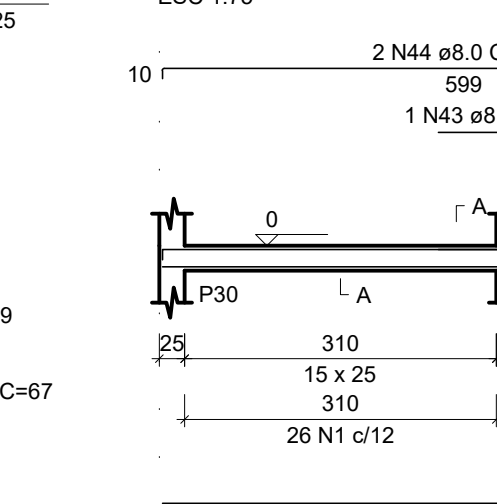
CORTE
ESC 1:75



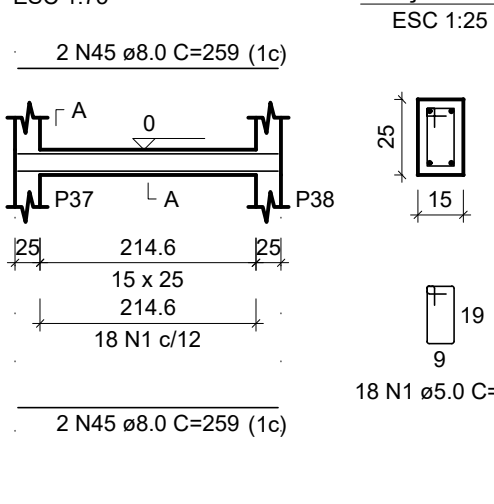
CORTE
ESC 1:75



CORTE
ESC 1:75



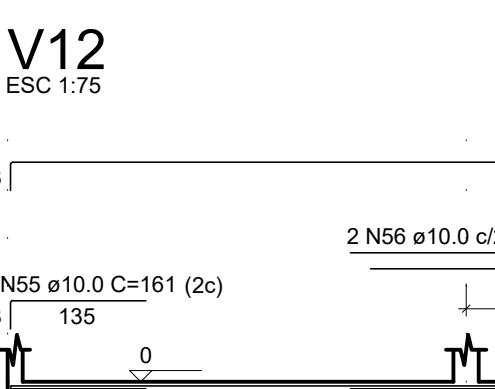
CORTE
ESC 1:75



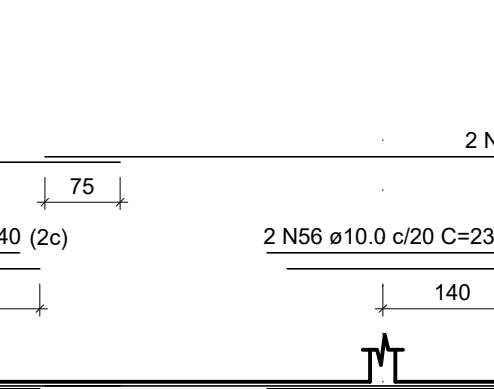
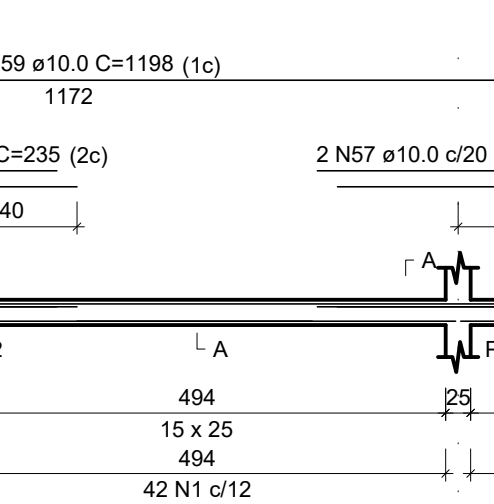
CORTE
ESC 1:75



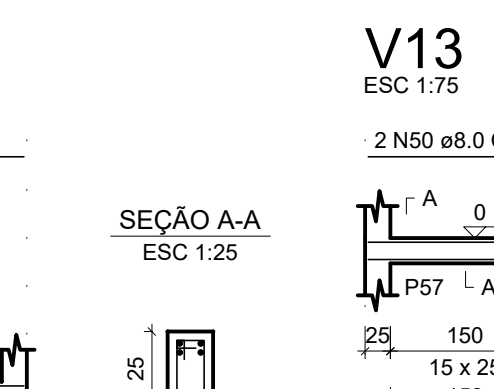
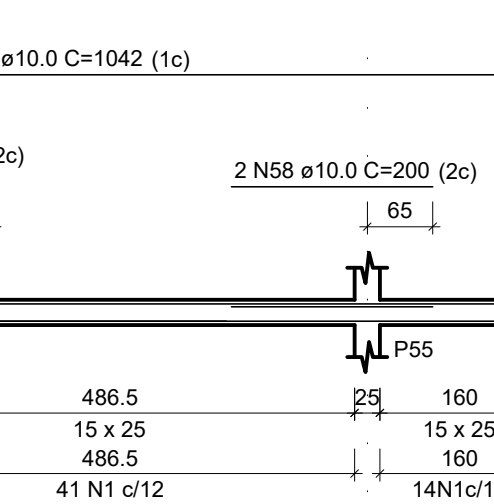
CORTE
ESC 1:75



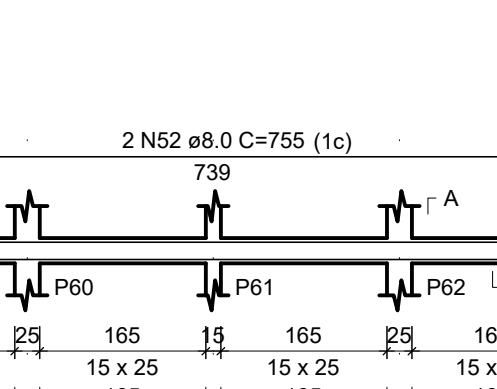
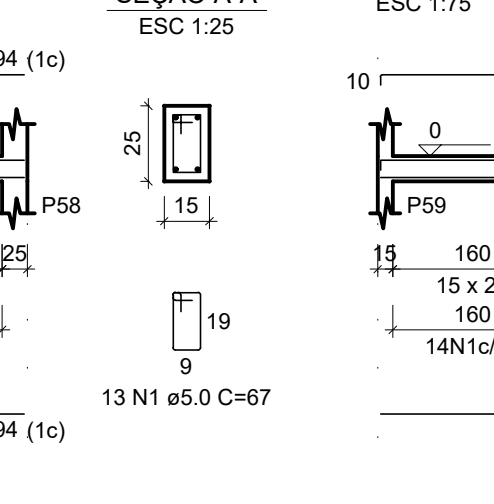
CORTE
ESC 1:75



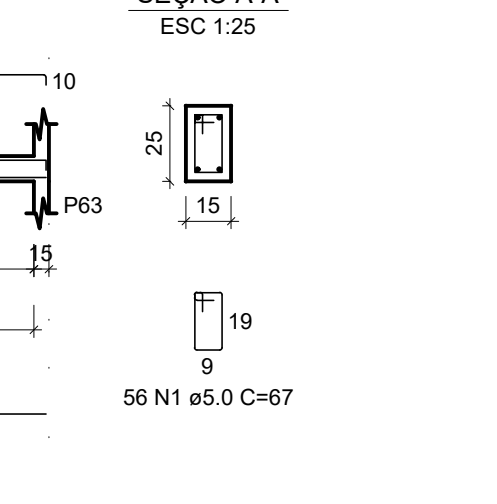
CORTE
ESC 1:75



CORTE
ESC 1:75



CORTE
ESC 1:75



CORTE
ESC 1:75

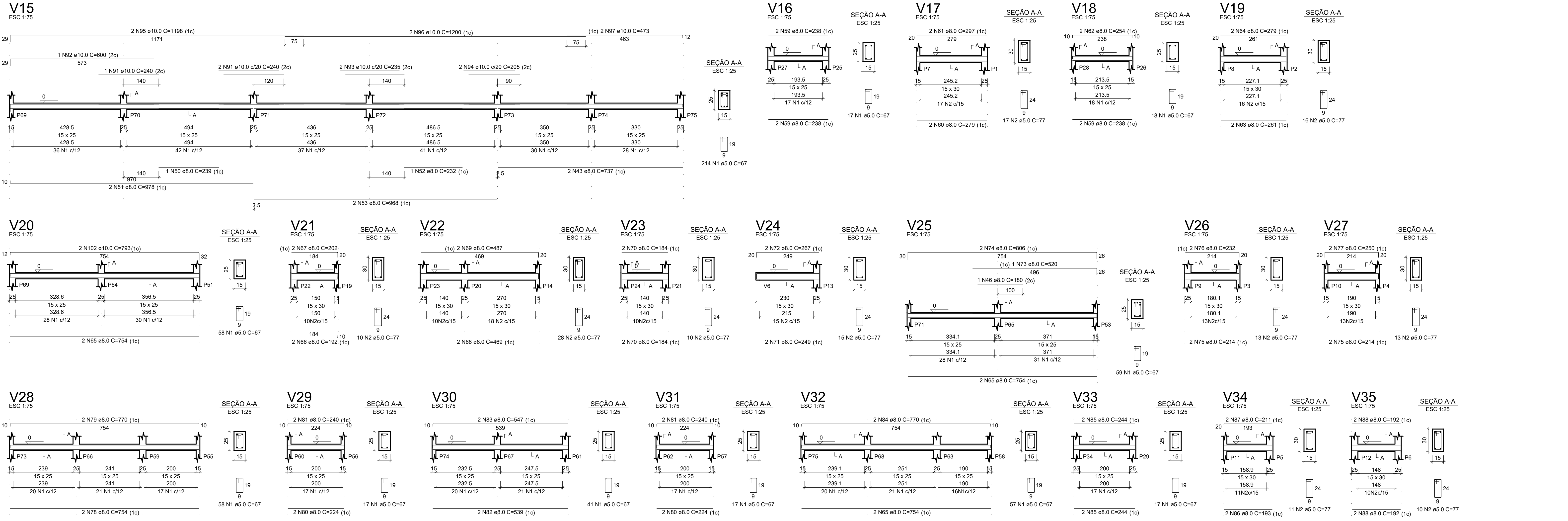


CORTE
ESC 1:75



CORTE
ESC 1:75

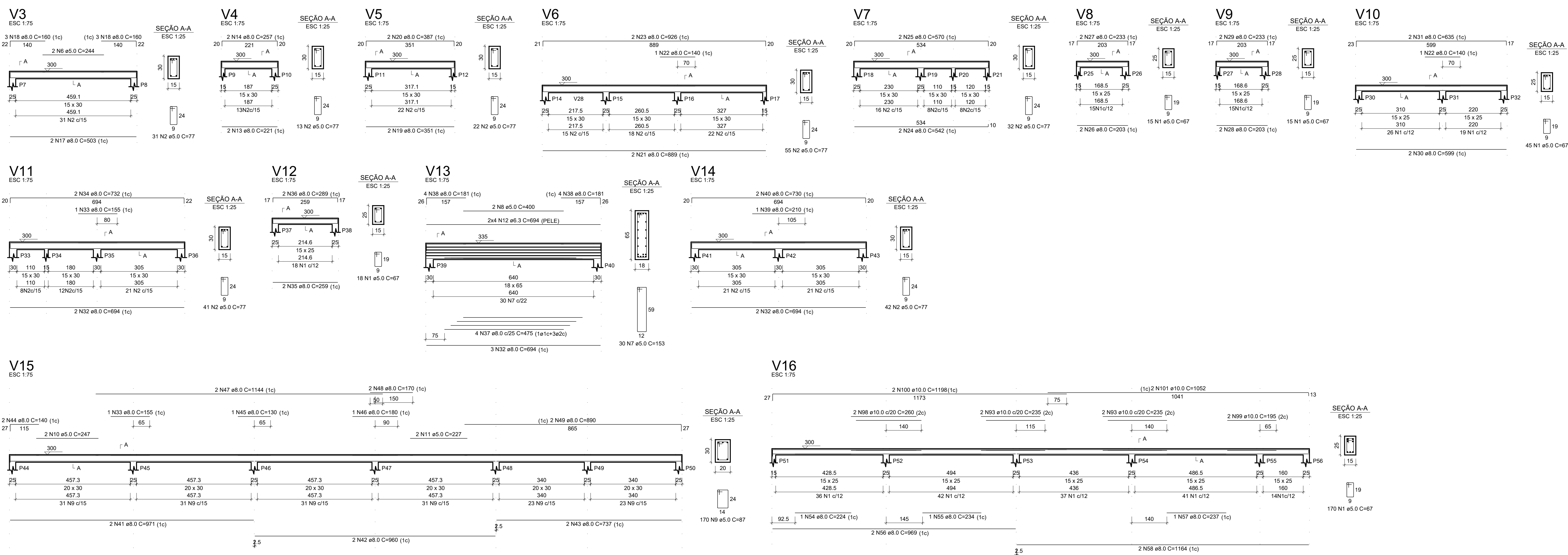
DETALHAMENTO VIGAS TÉRREO NIVEL - 40



RELAÇÃO DO AÇO									
AÇO	N	DIAM (mm)	QUANT	C UNIT (cm)	C TOTAL (cm)				
CABO	1	5.0	2321	67	155507				
	2	5.0	983	77	75681				
	3	5.0	56	83	4648				
	4	5.0	175	34	5950				
	5	5.0	175	107	18725				
	6	5.0	2	244	488				
	7	5.0	30	153	4590				
	8	5.0	2	400	800				
	9	5.0	170	87	14790				
	10	5.0	2	247	494				
CASO	11	5.0	2	227	454				
	12	6.3	8	247	1984				
	13	8.0	4	221	884				
	14	8.0	4	257	1028				
	15	8.0	2	351	702				
	16	8.0	2	387	774				
	17	8.0	2	503	1006				
	18	8.0	2	160	320				
	19	8.0	2	351	702				
	20	8.0	2	387	774				
	21	8.0	2	899	1778				
	22	8.0	2	140	280				
	23	8.0	2	928	1852				
	24	8.0	2	542	1084				
	25	8.0	2	570	1140				
	26	8.0	2	203	406				
	27	8.0	2	233	466				
	28	8.0	2	203	406				
	29	8.0	2	233	466				
	30	8.0	2	233	466				
	31	8.0	2	630	1260				
	32	8.0	2	155	310				
	33	8.0	2	155	310				
	34	8.0	2	752	1504				
	35	8.0	2	269	538				
	36	8.0	2	269	538				
	37	8.0	4	475	1900				
	38	8.0	6	161	966				
	39	8.0	1	210	210				
	40	8.0	2	730	1460				
	41	8.0	2	971	1942				
	42	8.0	2	960	1920				
	43	8.0	4	737	2948				
	44	8.0	2	140	280				
	45	8.0	2	130	260				
	46	8.0	2	190	380				
	47	8.0	2	1144	2288				
	48	8.0	2	170	340				
	49	8.0	2	890	1780				
	50	8.0	1	239	239				
	51	8.0	2	278	556				
	52	8.0	2	232	464				
	53	8.0	2	968	1936				
	54	8.0	1	234	234				
	55	8.0	2	234	468				
	56	8.0	2	969	1938				
	57	8.0	2	237	474				
	58	8.0	2	1164	2328				
	59	8.0	6	238	1428				
	60	8.0	2	279	558				
	61	8.0	2	254	508				
	62	8.0	2	254	508				
	63	8.0	2	291	582				
	64	8.0	2	279	558				
	65	8.0	6	754	4524				
	66	8.0	2	150	300				
	67	8.0	2	202	404				
	68	8.0	4	487	1948				
	69	8.0	4	487	1948				
	70	8.0	2	184	368				
	71	8.0	2	249	498				
	72	8.0	2	267	534				
	73	8.0	2	300	600				
	74	8.0	2	214	428				
	75	8.0	2	232	464				
	76	8.0	2	230	460				
	77	8.0	2	754	1508				
	78	8.0	2	770	1540				
	79	8.0	4	224	896				
	80	8.0	4	240	960				
	81	8.0	2	539	1078				
	82	8.0	2	539	1078				
	83	8.0	2	327.4	654.8				
	84	8.0	2	770	1540				
	85	8.0	2	244	488				
	86	8.0	2	193	386				
	87	8.0	2	211	422				
	88	8.0	4	192	768				
	89	10.0	294	297	8718				
	90	10.0	12	332	3984				
	91	10.0	3	240	720				
	92	10.0	1	600	600				
	93	10.0	2	205	410				
	94	10.0	2	205	410				
	95	10.0	2	1198	2396				
	96	10.0	2	1200	2400				
	97	10.0	2	473	946				
	98	10.0	2	260	520				
	99	10.0	2	260	520				
	100	10.0	2	1198	2396				
	101	10.0	2	1052	2104				
	102	10.0	2	733	1466				
	103	12.5	16	297	4752				

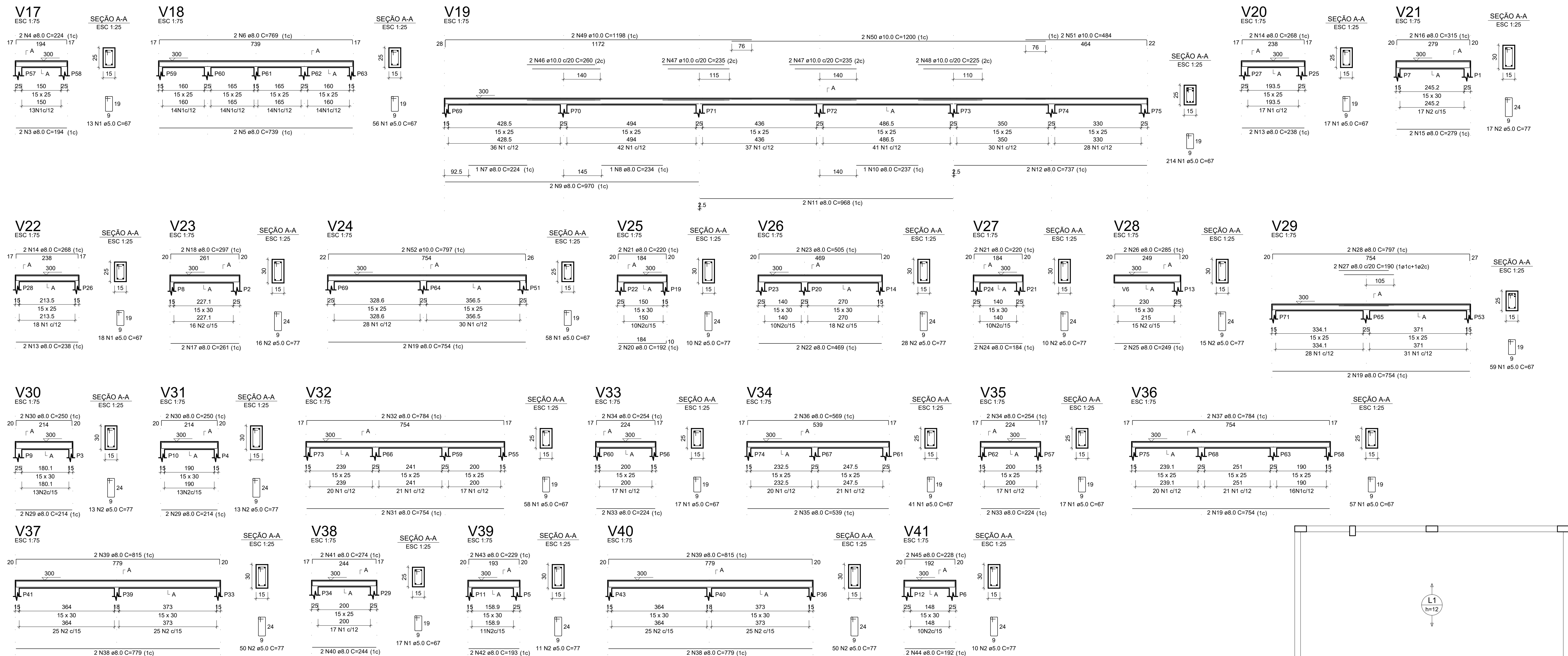
RESUMO DO AÇO			
AÇO	DIAM (mm)	C TOTAL (m)	PESO + 10% (kg)
CABO	6.3	55.5	14.9
CABO	8.0	736.1	345.4
CABO	10.0	1071.8	726.9
CABO	5.0	2488	423.5
PESO TOTAL (kg)			
CABO	1137.3		
CABO	423.5		
Volume de concreto (C-25) = 19.43 m³			
Área de forma = 341.13 m²			

DETALHAMENTO DE VIGAS SUPERIOR - NIVEL 300



		GOVERNO DO ESTADO DO PIAUÍ	
		SEDUC - SECRETARIA DE ESTADO DA EDUCAÇÃO	
DEPARTAMENTO:	GERÊNCIA DE ARQUITETURA E ENGENHARIA	DESENHO:	EST1
TÍTULO DO PROJETO:	PROJETO DE CONSTRUÇÃO - U.E. FRANCISCO ANTONIO DA SILVA	PRONOME:	06/08
INDICAÇÃO DO SERVIÇO:	Projeto Jose Gregorio Da Costa, s/n Centro, São Braz do Piauí - PI, 64720-000	ESCALA:	INDICADA
TÍTULO DO DESENHO:		REVISÃO:	01
	São Braz - PI	ZONA:	URBANA
		DESENHO:	
		DATA:	
		PROJETO BÁSICO	

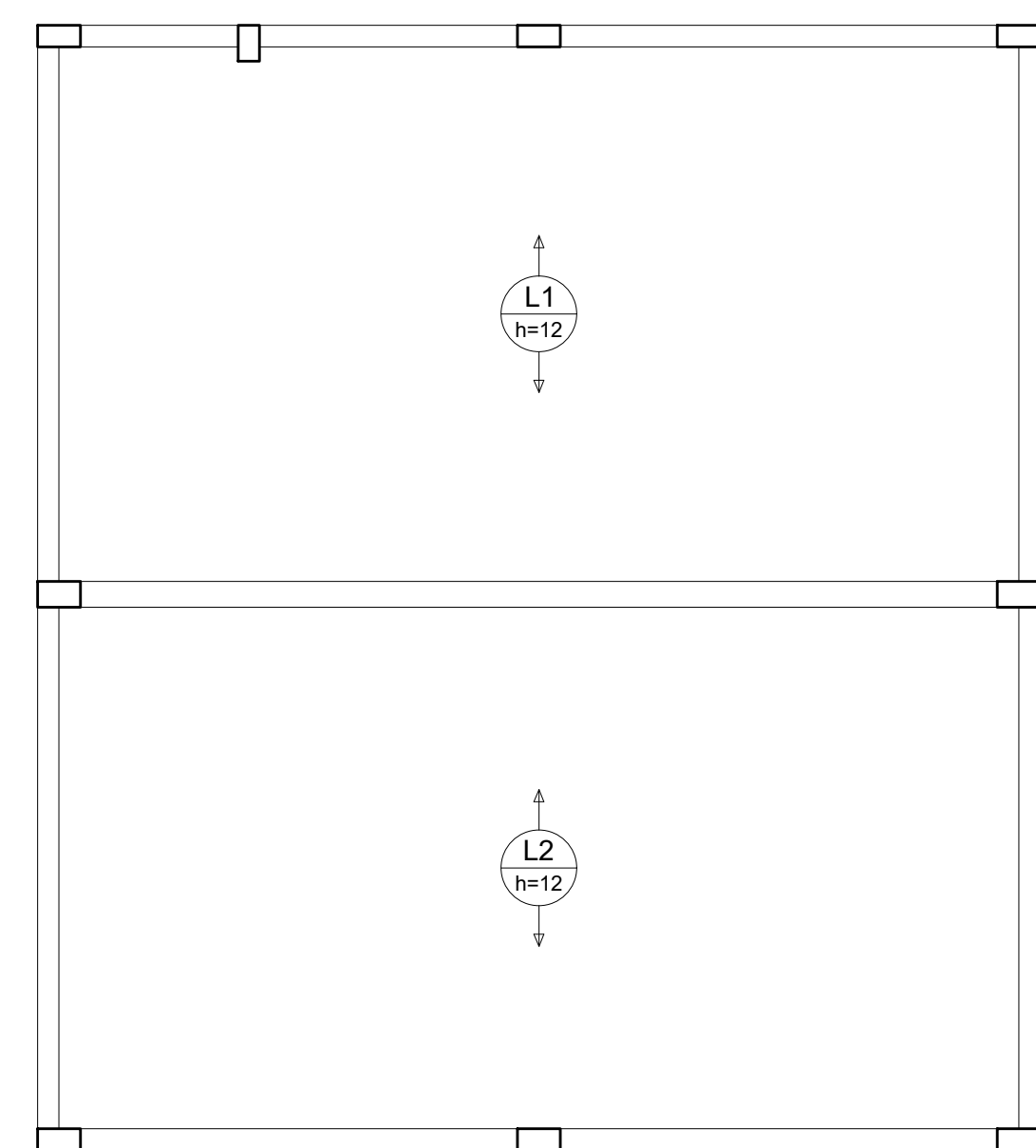
DETALHAMENTO DE VIGAS SUPERIOR - NIVEL 300



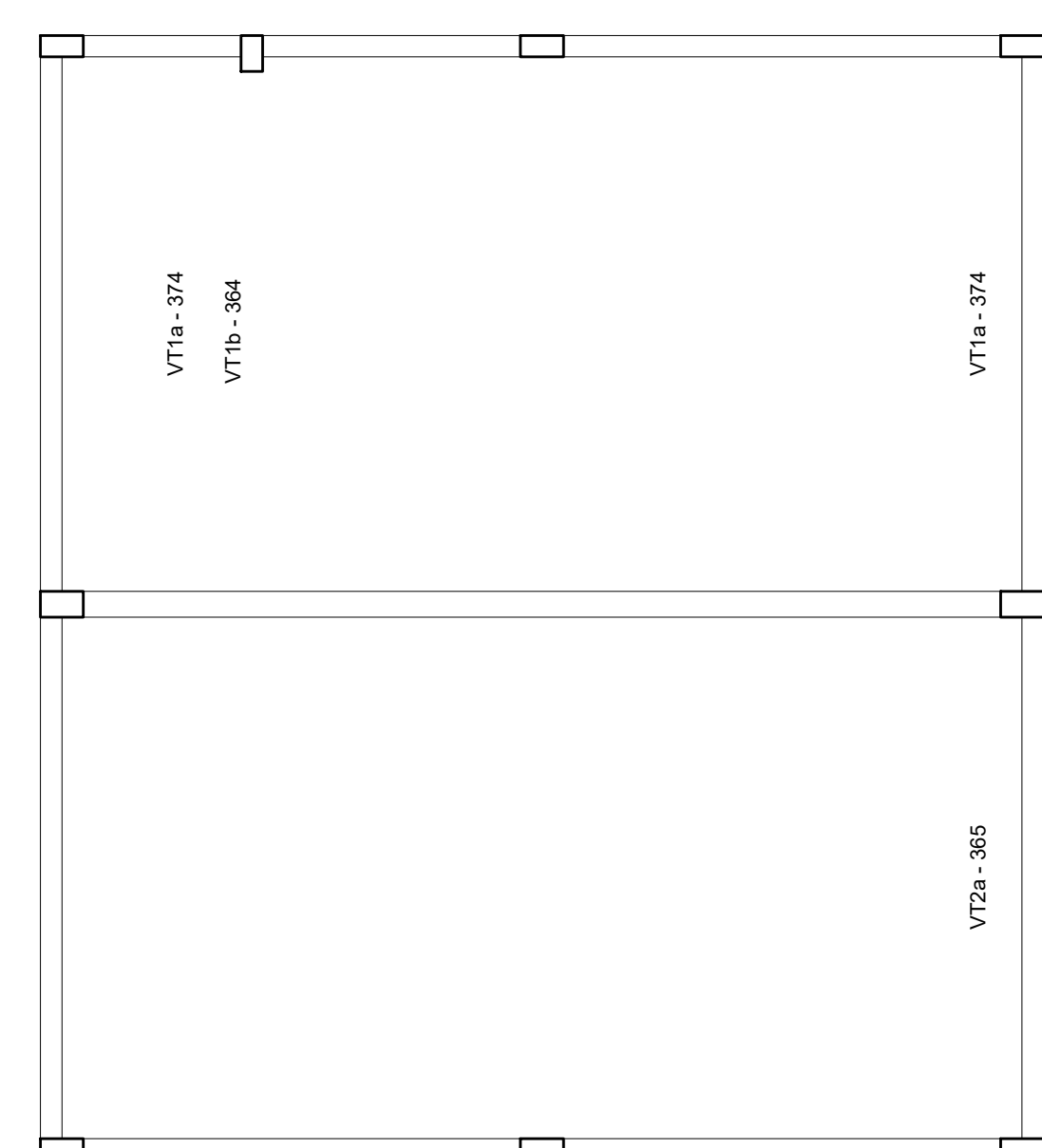
RELAÇÃO DO AÇO					
V17		V18	V19		
V20	V21	V22	V23	V24	
V25	V26	V27	V28	V29	
V30	V31	V32	V33	V34	
V35	V36	V37	V38	V39	
V40	V41	V42	V43	V44	
AÇO	N	DIAM	QUANT	C LUNIT	C TOTAL
CABO	1	8,0	842	24	77
	2	5,0	243	77	18914
CASO	1	8,0	842	24	77
	2	5,0	243	77	18914
	3	8,0	224	44	1538
	4	8,0	224	44	1538
	5	8,0	224	44	1538
	6	8,0	224	44	1538
	7	8,0	224	44	1538
	8	8,0	224	44	1538
	9	8,0	224	44	1538
	10	8,0	224	44	1538
	11	8,0	224	44	1538
	12	8,0	224	44	1538
	13	8,0	224	44	1538
	14	8,0	224	44	1538
	15	8,0	224	44	1538
	16	8,0	224	44	1538
17	8,0	201	52	524	
18	8,0	207	59	584	
19	8,0	234	574	45244	
20	8,0	234	574	45244	
21	8,0	240	600	4800	
22	8,0	240	600	4800	
23	8,0	240	600	4800	
24	8,0	240	600	4800	
25	8,0	240	600	4800	
26	8,0	240	600	4800	
27	8,0	240	600	4800	
28	8,0	240	600	4800	
29	8,0	240	600	4800	
30	8,0	240	600	4800	
31	8,0	240	600	4800	
32	8,0	240	600	4800	
33	8,0	240	600	4800	
34	8,0	240	600	4800	
35	8,0	240	600	4800	
36	8,0	240	600	4800	
37	8,0	240	600	4800	
38	8,0	240	600	4800	
39	8,0	240	600	4800	
40	8,0	240	600	4800	
41	8,0	240	600	4800	
42	8,0	240	600	4800	
43	8,0	240	600	4800	
44	8,0	240	600	4800	
45	8,0	240	600	4800	
46	8,0	240	600	4800	
47	8,0	240	600	4800	
48	8,0	240	600	4800	
49	8,0	240	600	4800	
50	8,0	240	600	4800	
51	8,0	240	600	4800	
52	8,0	240	600	4800	
53	8,0	240	600	4800	
54	8,0	240	600	4800	
55	8,0	240	600	4800	
56	8,0	240	600	4800	
57	8,0	240	600	4800	
58	8,0	240	600	4800	
59	8,0	240	600	4800	
60	8,0	240	600	4800	
61	8,0	240	600	4800	
62	8,0	240	600	4800	
63	8,0	240	600	4800	
64	8,0	240	600	4800	
65	8,0	240	600	4800	
66	8,0	240	600	4800	
67	8,0	240	600	4800	
68	8,0	240	600	4800	
69	8,0	240	600	4800	
70	8,0	240	600	4800	
71	8,0	240	600	4800	
72	8,0	240	600	4800	
73	8,0	240	600	4800	
74	8,0	240	600	4800	
75	8,0	240	600	4800	
76	8,0	240	600	4800	
77	8,0	240	600	4800	
78	8,0	240	600	4800	
79	8,0	240	600	4800	
80	8,0	240	600	4800	
81	8,0	240	600	4800	
82	8,0	240	600	4800	
83	8,0	240	600	4800	
84	8,0	240	600	4800	
85	8,0	240	600	4800	
86	8,0	240	600	4800	
87	8,0	240	600	4800	
88	8,0	240	600	4800	
89	8,0	240	600	4800	
90	8,0	240	600	4800	
91	8,0	240	600	4800	
92	8,0	240	600	4800	
93	8,0	240	600	4800	
94	8,0	240	600	4800	
95	8,0	240	600	4800	
96	8,0	240	600	4800	
97	8,0	240	600	4800	
98	8,0	240	600	4800	
99	8,0	240	600	4800	
100	8,0	240	600	4800	

AÇO	DIAM (mm)	C.TOTAL (m)	PESO + 10% (kg)
CA50	8.0	450.9	195.7
	10.0	92.7	62.9
CA60	5.0	617.3	104.7
PESO TOTAL (kg)			
CA50	258.6		
CA60	104.7		

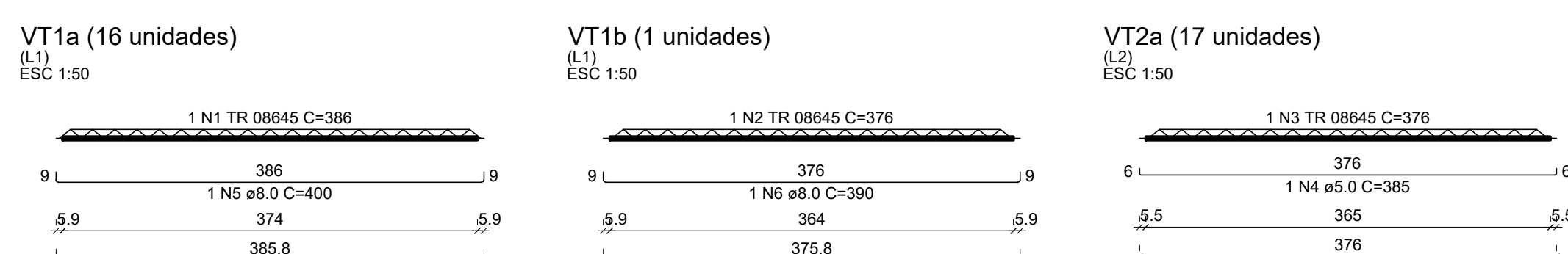
Volume de concreto (C-25) = 7.59 m³
 Área de forma = 85.23 m²



Armação positiva das lajes do pavimento SUPERIOR (Eixo Y)



Planta de vigotas pré-moldadas



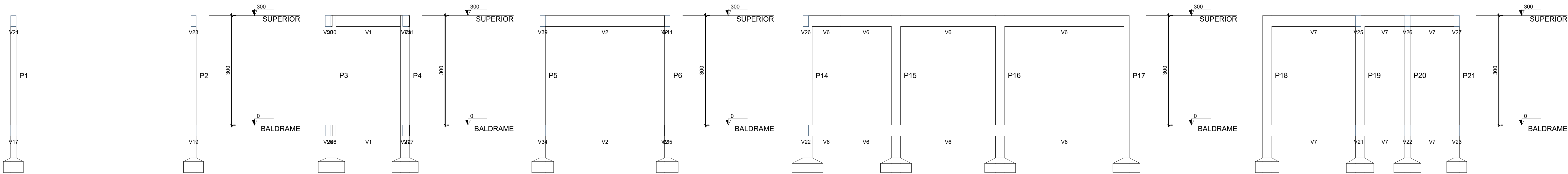
16xVT1a	VT1b	17xVT2a			
AÇO	N	DIAM (mm)	QUANT	C.UNIT (c/v)	C.TOTAL (cm)
CA80	1	TR 0845	16	386	6178
	2	TR 0845	1	378	378
	3	TR 0845	17	378	6392
CA50	4	5.0	17	385	6545
	5	8.0	16	400	6400
	6	8.0	1	390	390

RESUMO DO AÇO

AÇO	DIAM (mm)	C.TOTAL (m)	PESO + 10% (kg)
CA50	8.0	67.9	29.5
CA80	5.0	65.5	11.1
TR 08645		129.4	117
PESO TOTAL (kg)			
CA50	29.5		
CA80	128.1		

Volume de concreto (C-25) = 0.00 m³
 Área de forma = 0.00 m²

 Piauí GOVERNO DO ESTADO	<h1 style="text-align: center;">GOVERNO DO ESTADO DO PIAUÍ</h1>	
	<h2 style="text-align: center;">SEDUC - SECRETARIA DE ESTADO DA EDUCAÇÃO</h2>	
DEPARTAMENTO: GERÊNCIA DE ARQUITETURA E ENGENHARIA	DESENHO:	
TÍTULO DO PROJETO DE CONSTRUÇÃO - U/E FRANCISCO ANTONIO DA SILVA	<h1 style="text-align: center;">EST 1</h1>	
ENDEREÇO DO SERVIÇO: Praça Jose Gregorio Da Costa, s/n Centro, São Braz do Piauí - PI, 64720-000	FRANCHIA:	
TÍTULO DO DESENHO:	02720	
São Braz - PI	ZONA URBANA	DESENHO:
PROJETO BÁSICO		DATA:
		REVISÃO:
		<h1 style="text-align: center;">01</h1>



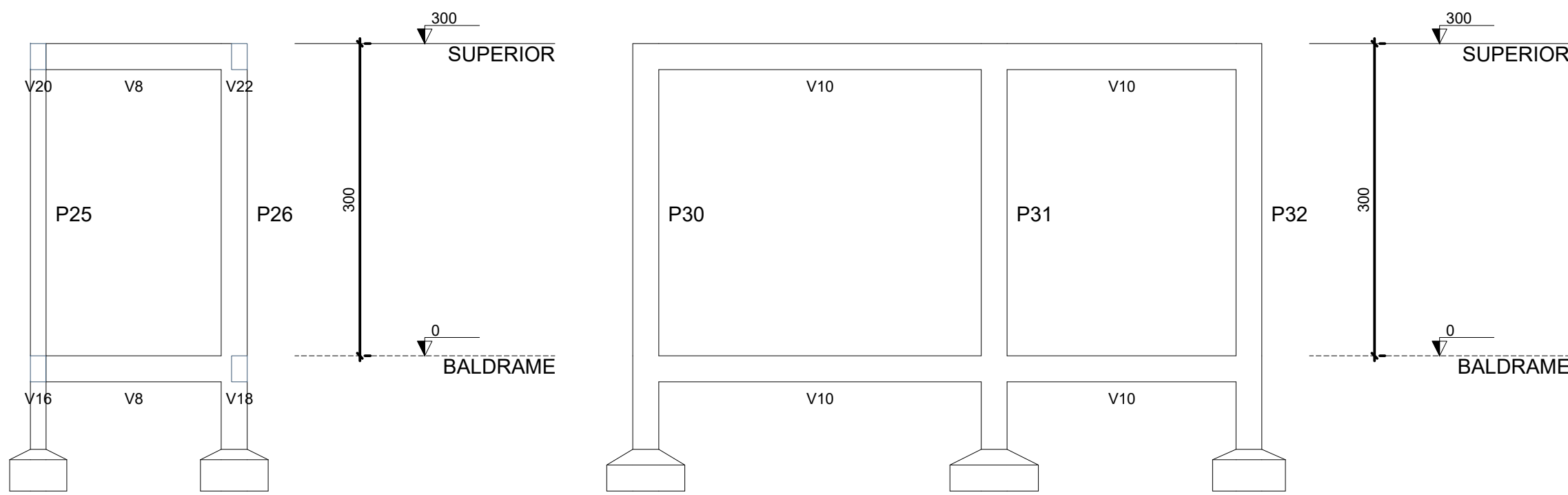
Corte A-A
escala 1:50

Corte B-B
escala 1:50

Corte C-C
escala 1:50

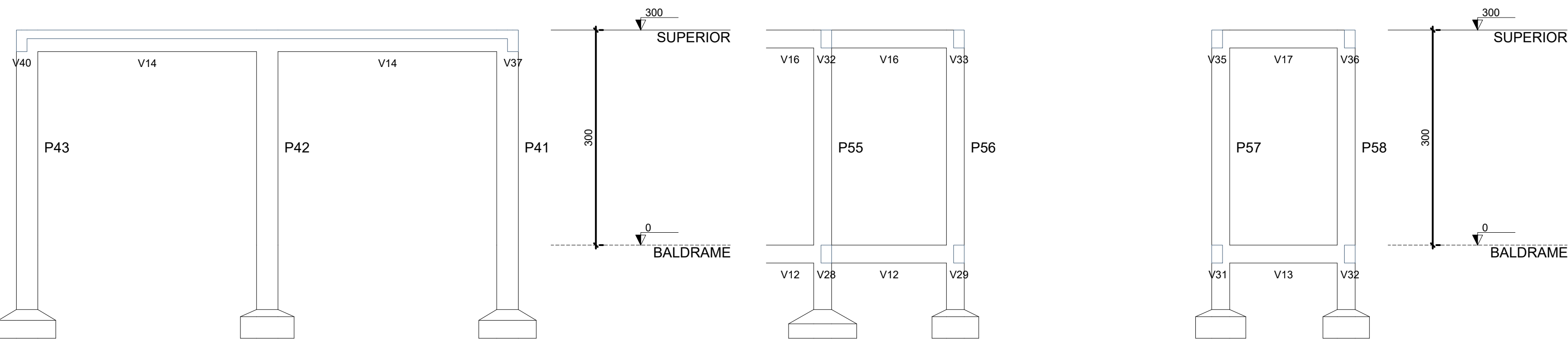
Corte D-D
escala 1:50

Corte E-E
escala 1:50



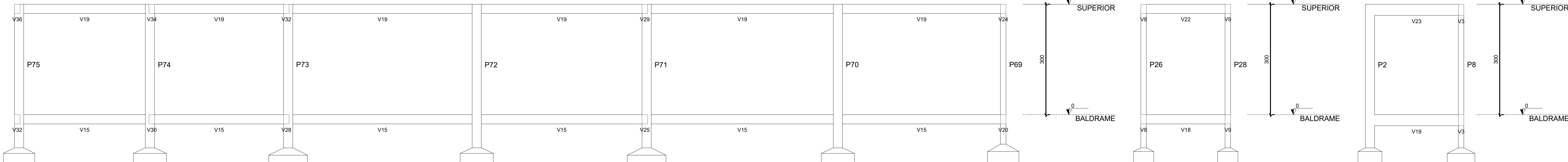
Corte F-F
escala 1:50

Corte G-G
escala 1:50



Corte H-H
escala 1:50

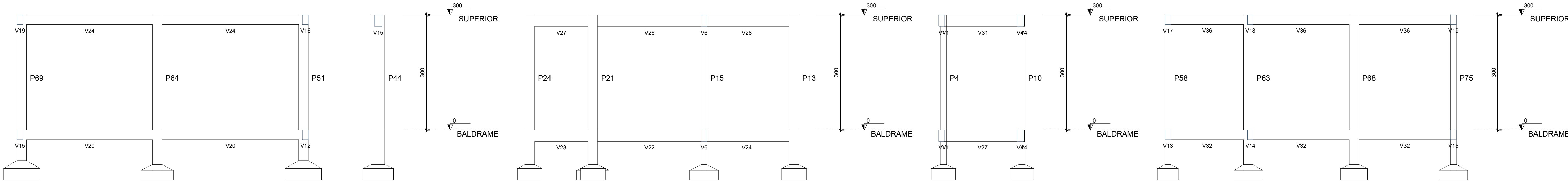
Corte I-I
escala 1:50



Corte J-J
escala 1:50

Corte K-K
escala 1:50

Corte L-L
escala 1:50

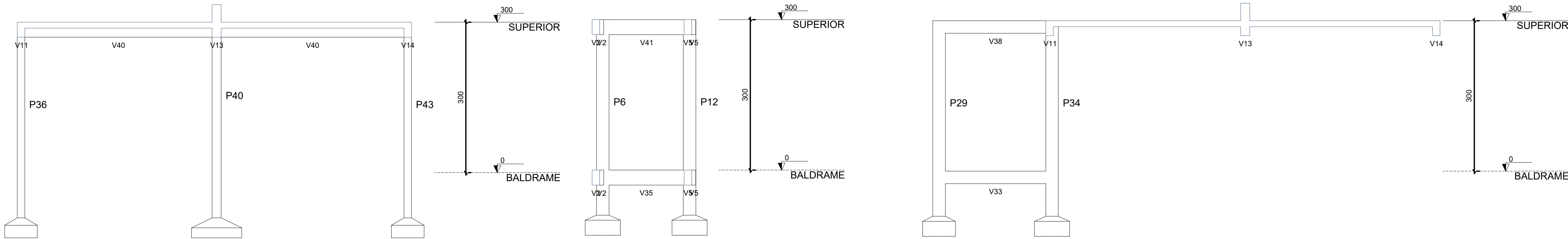


Corte M-M
escala 1:50

Corte N-N
escala 1:50

Corte O-O
escala 1:50

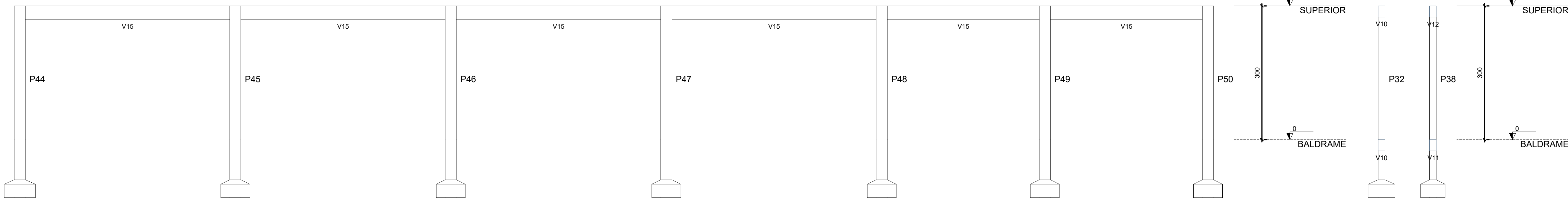
Corte P-P
escala 1:50



Corte Q-Q
escala 1:50

Corte R-R
escala 1:50

Corte U-U
escala 1:50



Corte S-S
escala 1:50

Corte T-T
escala 1:50